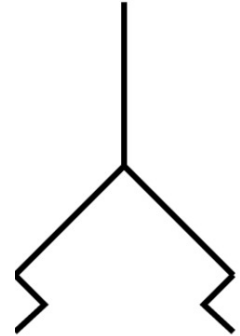
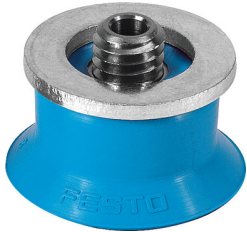


Vacuum suction cup ESS-30-EU

Part number: 189343

FESTO



Data sheet

Feature	Value
Min. workpiece radius	50 mm
Nominal width	3 mm
Suction cup diameter	30 mm
Suction cup volume	2.12 cm ³
Type code	ESS
Connection position	Top
Mounting position	Any
Symbol	00991485
Classification of suction cup holder	Size 4
Suction cup shape	Round, extra-deep
Operating pressure	0 bar ... 0.95 bar
Nominal operating pressure	-0.7 bar
Operating medium	Atmospheric air based on ISO 8573-1:2010 [7::-]
Corrosion resistance class (CRC)	1 - Low corrosion stress
For use in the food industry	See supplementary material information
Ambient temperature	-20 °C ... 60 °C
Holding force at nominal operating pressure	37.2 N
Lateral force at nominal operating pressure	41.5 N
Product weight	9.2 g
Type of mounting	Via vacuum connection
Vacuum connection	M6
Color	Blue
Shore hardness	60 +/- 5
Material of screwed trunnion	Brass, nickel-plated Steel, galvanized and chrome-plated
Note on materials	Free of copper and PTFE Contains paint-wetting impairment substances RoHS-compliant
Suction cup material	PUR